



Installing the USB Drivers for Lightning MultiMonitor

Installing the Hardware

Installing the Software



Getting Started with Lightning

Use this section to install the Windows™ drivers & software, initialize the software and to start recording data.

Connecting the Hardware and Installing the USB Drivers for XP	3
Connecting the Hardware and installing the drivers for Windows 7 / 64-bit Windows systems	7
Connecting the Hardware and installing the drivers for Windows 8 systems	10
Installing the VitalMonitor and VitalStore software	11

Connecting the Hardware and Installing the USB Drivers for XP

This procedure is the same for Lightning, VitalStore, Sentinel and all wireless receivers. Where VitalStore is referenced in the pictures, any of the preceding may apply.

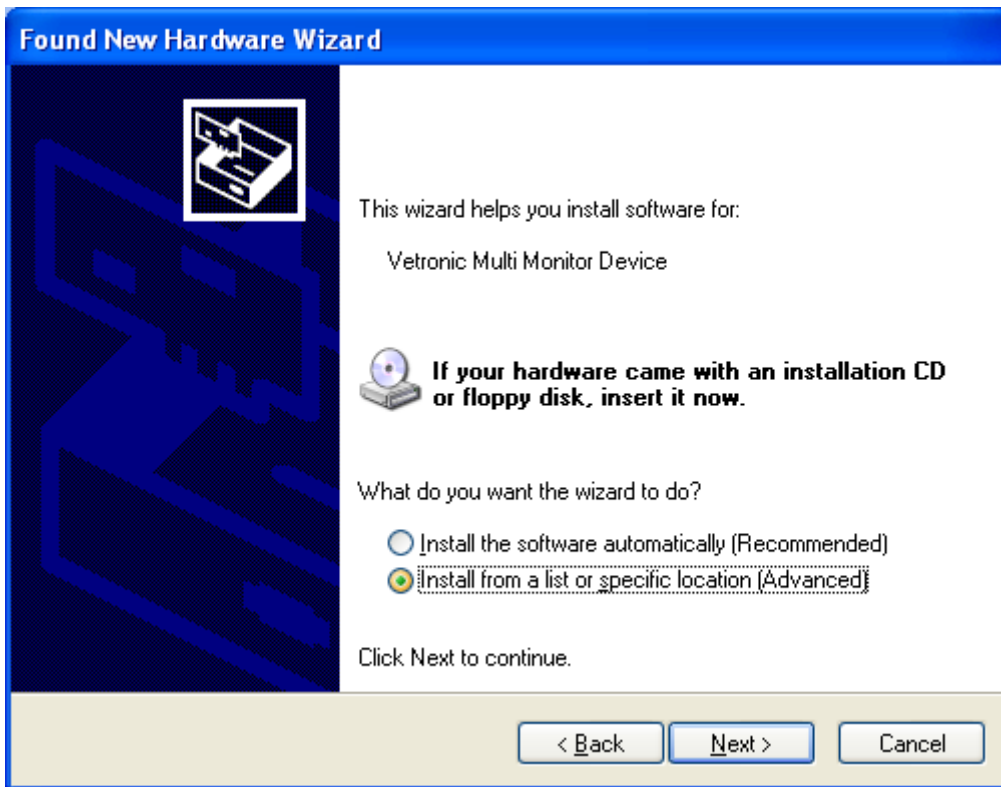
The first step in getting started is to install the Windows™ drivers necessary for communication between the main unit and your PC or laptop. Connect the USB cable from the back of the unit to the PC or laptop. Turn the unit on. The PC will detect the presence of a new device and the following information bubble will appear in the bottom right hand corner of the screen



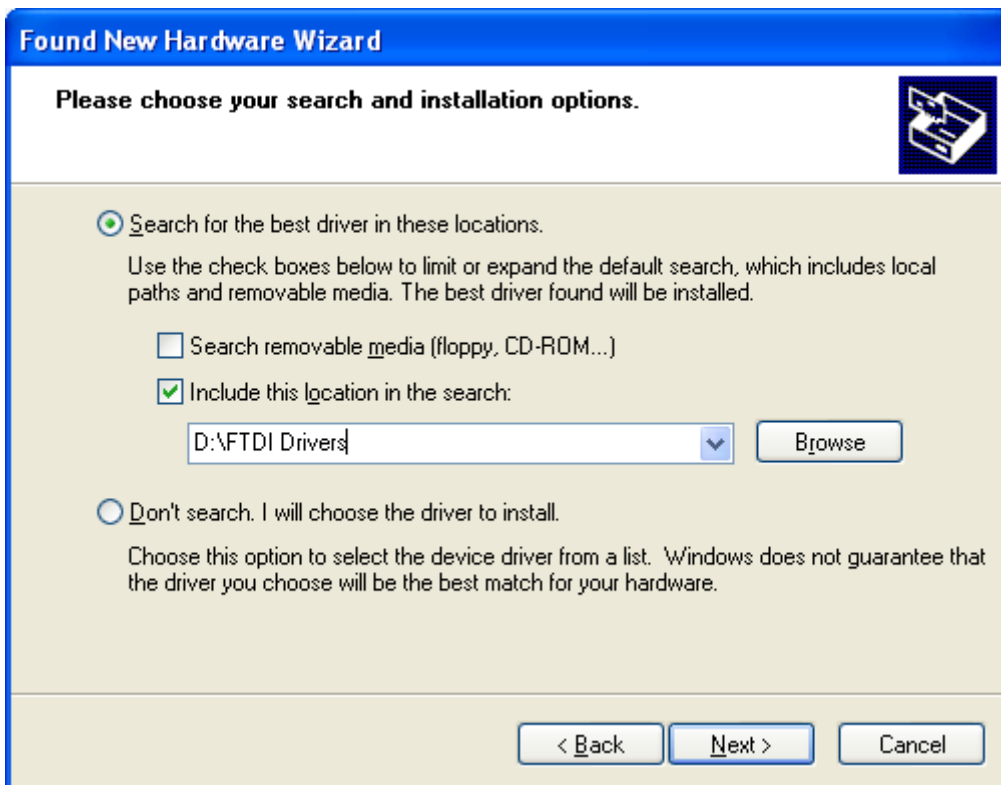
This will be followed by the “Found New Hardware” wizard:



Select “No, not this time” and press “Next”

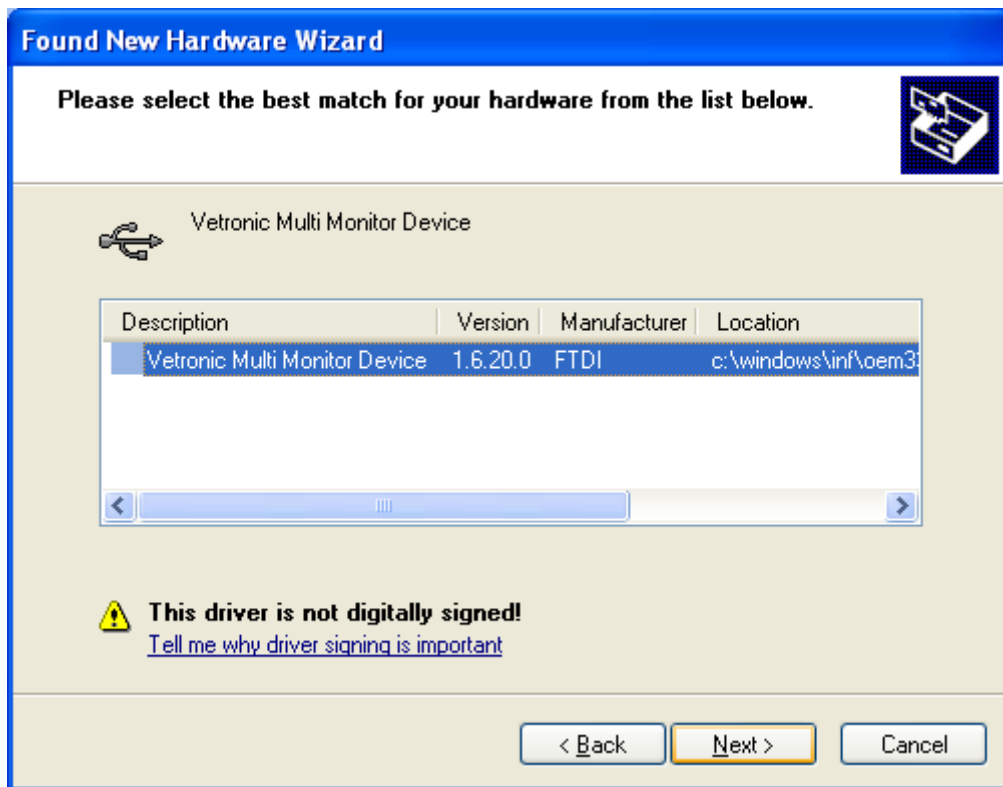


Choose to “install from a list or specific location (Advanced)” and then click “Next”



Use the Browse button to find the CD that came with your Lightning system and then navigate to the FTDI Drivers folder. Then when this is done click on “Next”

The PC will find a suitable driver and display it in the dialog box



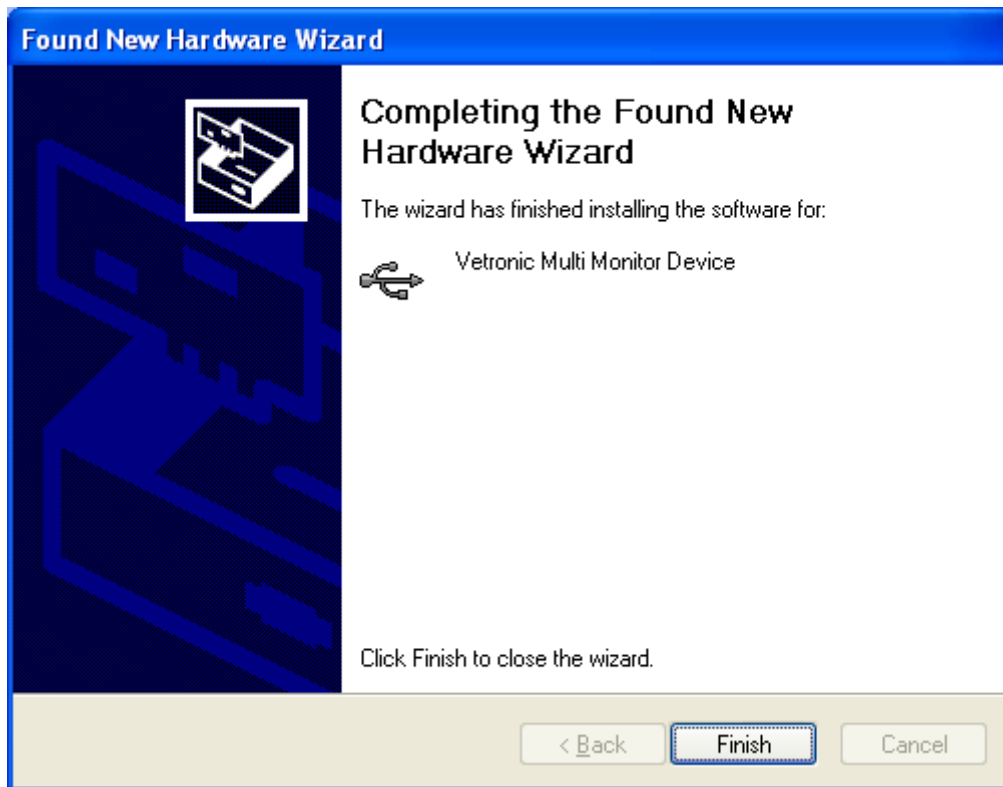
Note that the name of the driver may vary but will always reference a Vetronic Device.

Click "Next"



A Windows™ dialog box appears warning that this is not a digitally signed driver. This is OK as signed drivers are not available. Click "Continue Anyway"

The driver is then installed and the last dialog is a confirmation dialog that the installation is complete.



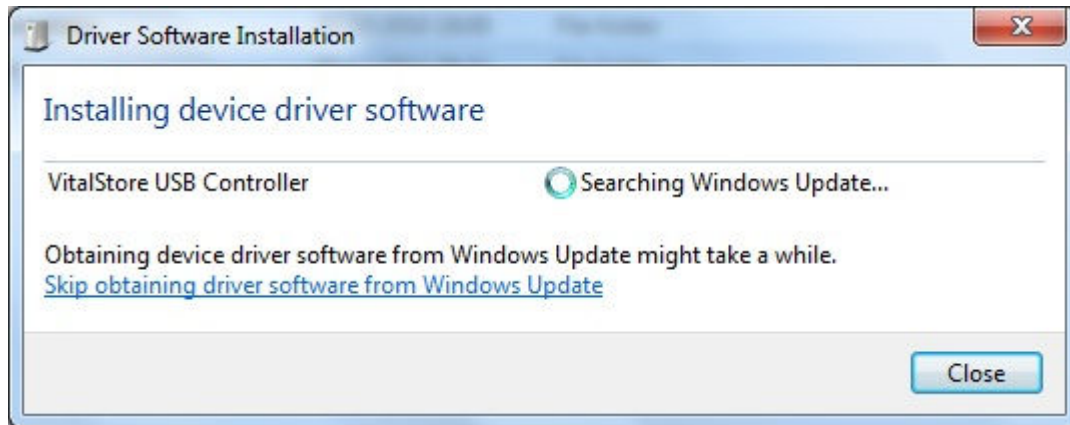
The hardware is now installed and ready for use.

The VitalMonitor software suite should now be installed.

Connecting the Hardware and installing the USB drivers for Windows 7 / 64-bit Windows systems

This procedure is the same for Lightning, VitalStore, Sentinel and all wireless receivers. Where VitalStore is referenced in the pictures, any of the preceding may apply.

Plug in the USB cable between the unit and your PC or Laptop. Windows will respond by displaying the following dialog box:



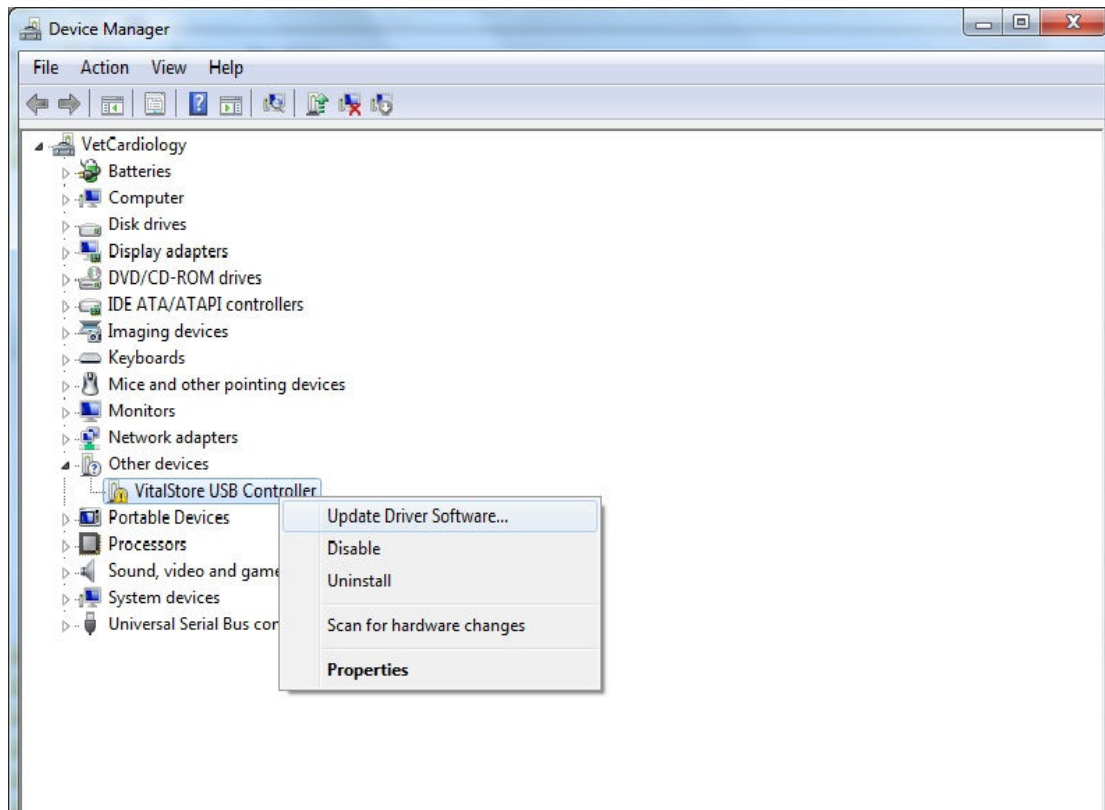
Do not allow Windows to search for and install the drivers as the correct ones will not be found. Instead click on the Close button to end this search.

A further dialog will appear:



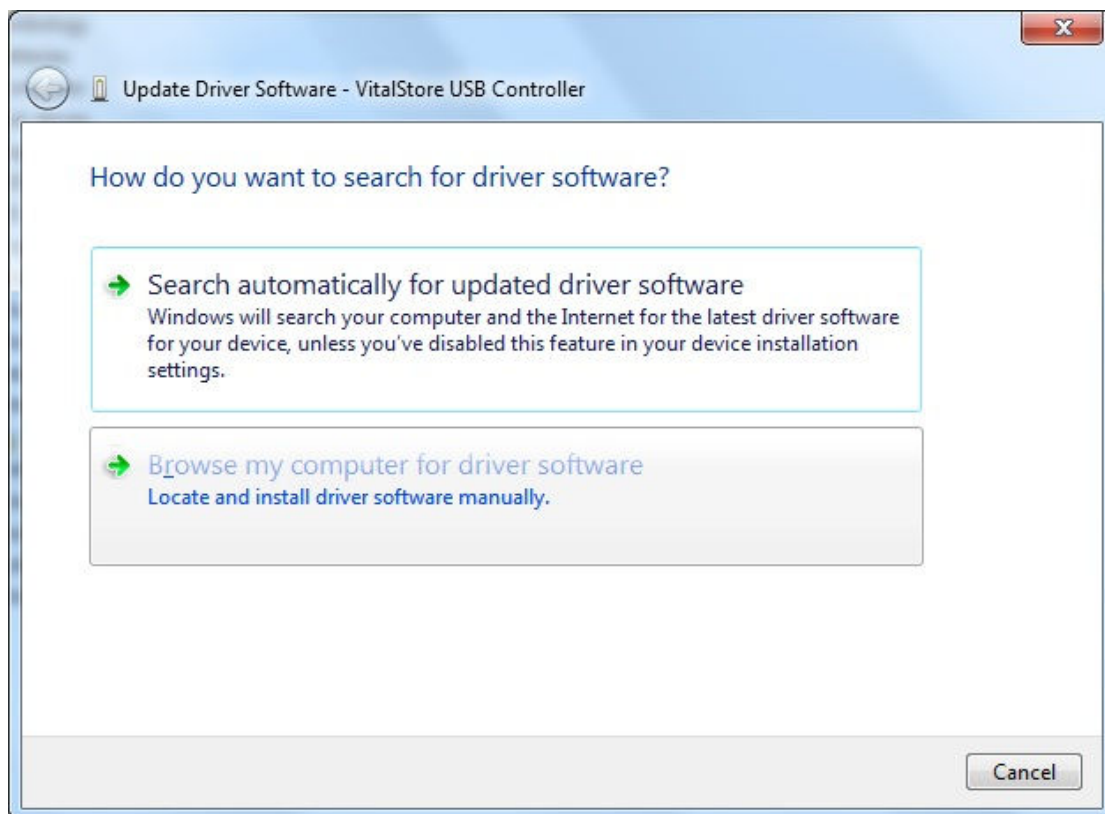
Click Yes.

Now got to Device manager by Clicking 'Start->Control Panel-> System & Security-> System'. Then select Device manager and when the list of devices appears on your screen, right click on the Lightning USB Controller, which will be identified by an icon of a Yellow circle containing an exclamation mark.

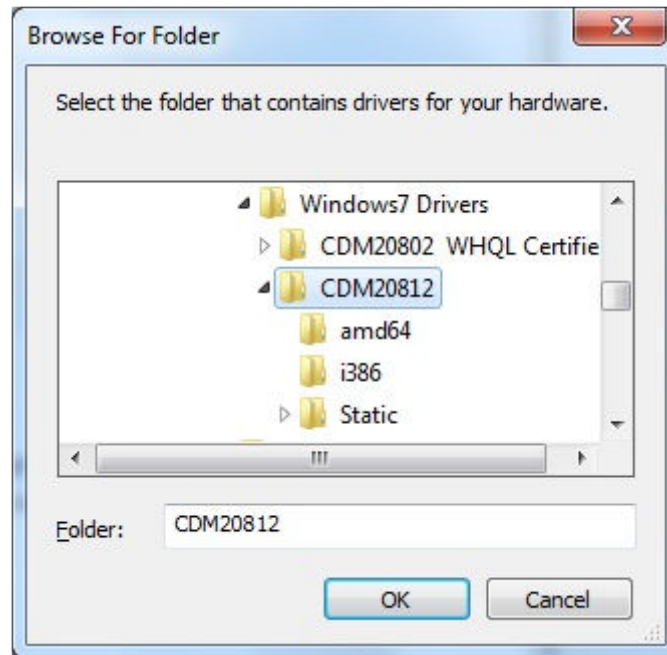


Click on Update Driver Software

Then when the following dialog box appears, select 'Browse my computer for driver software'

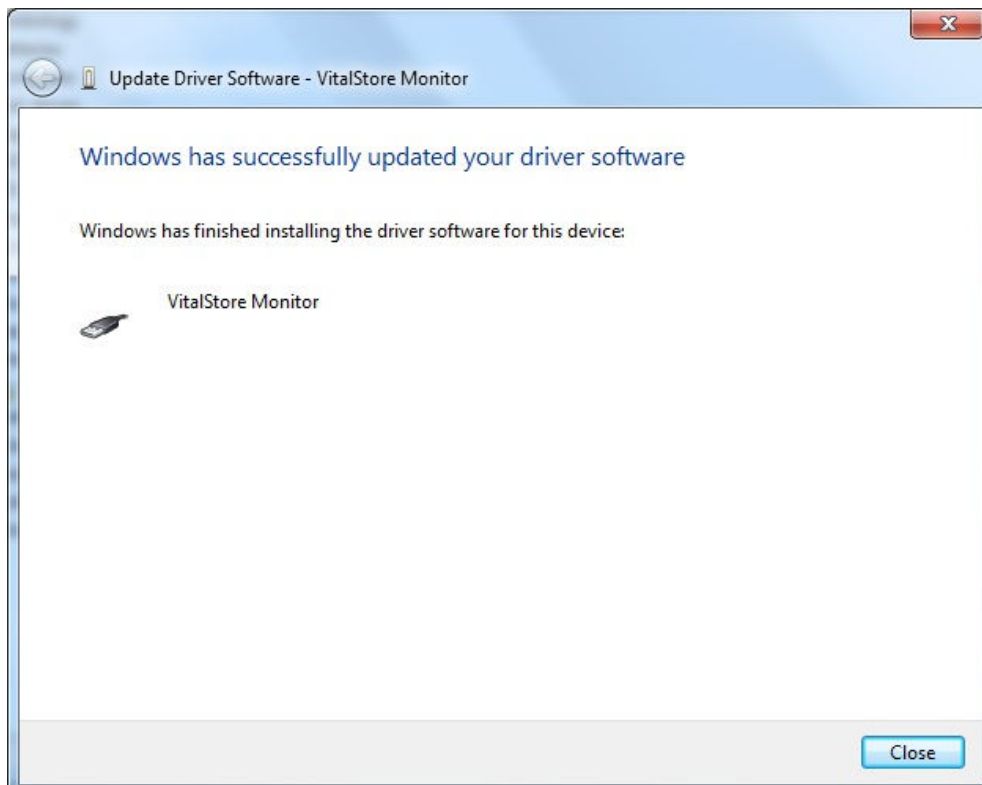


Then using the displayed dialog box, navigate to the folder containing the drivers. This can be found on your CD ROM that came with your hardware and will be in a folder called 'Windows 7 Drivers'



Choose the latest version Directory (currently CDM 2.08.24 WHQL Certified) and then click OK.

Windows will then find the appropriate drivers and install them for you. These drivers are not digitally signed and if you are asked whether you wish to continue with the installation, choose "Continue Anyway". This completes the driver installation.



Connecting the Hardware and installing the USB drivers for Windows 8 systems

This procedure is the same for Lightning, VitalStore, Sentinel and all wireless receivers.

Where VitalStore is referenced in the pictures, any of the preceding may apply.

Plug the USB cable supplied with your unit into the unit and into the PC. Turn the unit ON. The PC will detect the presence of the device and start the driver installation. All new devices from Vetronic Services (June 2015 onwards) have generic Windows 8 compatible USB interfaces and so the PC should find the device and automatically install the drivers. This can take a while in some machines if the driver is not already on the machine and Windows needs to check Windows Updates in order to retrieve the correct version.

Once automatic installation is finished, the software should be installed.

If the installation is not automatic, follow the steps for installing Windows 7 drivers but instead of using the Windows 7 directory, use the Windows 8 directory for the FTDI drivers.

If during USB driver installation on Windows 8 you get a message stating that the Certificate is not valid then your unit does not have the correct USB signature as it was manufactured before June 2015. In that instance, please contact Vetronic Services for advice on how to proceed as your unit may need to be returned to the factory for USB port re-programming.

Installing the VitalMonitor and VitalStore software

The VitalMonitor software will be supplied on the CD or Flash drive supplied with your new unit. In the event that this is not available, the latest version can be found on the Vetronic Services website at

<http://www.vetronic.co.uk/products/article/lightning>

Scroll down to the Software Updates section on the right-hand side and download the latest version of the software. If your system is an older XP or Vista system then you must install the XP-only version, found on the same page.

If you do have the CD or if you have the software downloaded, double-click on the setup.exe file.

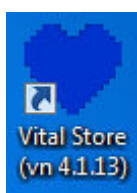
Program installation will start. Follow the installation Wizard to select destination directories. If you do not want to install the software anywhere other than on your local machine, accept the defaults, Licence agreements and click Next or OK. Installation is quick and automatic.

Once the software has been loaded two new icons will appear on the screen:

The red Heart is for the real-time monitoring software, **VitalMonitor**



The blue heart is for the review and analysis software, **VitalStore**



See the software operating manual for more information on these programs